
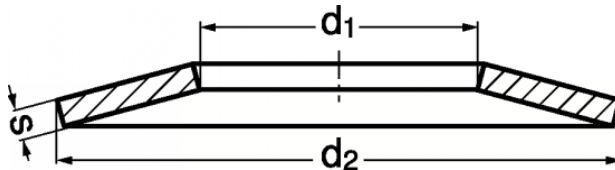


SCHOTELVEERRING

DIN-2093 ~EN-16983	
	
A2	
RVS	
209303200	-

DIN	DIN-2093
EN	EN-16983
ISO	-
CODE	20930
MATERIAAL	ROESTVAST STAAL A2
OPPERVLAKTE	-
CODE	3200
METRISCH	M-
VOORBEELD 8X3,2X0,5	
CODE	0080305
BESTELCODE	2093032000080305



D2	D1	S	D2	D1	S	D2	D1	S
8	3.2	0.2, 0.3, 0.4	22.5	11.2	0.6, 0.8, 1.25	50	18.4	1.25, 1.5, 2, 2.5, 3
8	4.2	0.2, 0.3, 0.4	23	8.2	0.7, 0.8, 0.9, 1	50	20.4	2, 2.5
10	3.2	0.3, 0.4, 0.5	23	10.2	0.9, 1, 1.25	50	22.4	2, 2.5
10	4.2	0.4, 0.5	23	12.2	1, 1.25, 1.5	50	25.4	1.25, 1.5, 2, 2.5, 3
10	5.2	0.25, 0.4, 0.5	25	10.2	1	56	28.5	1.5, 2, 3
12	4.2	0.4, 0.5, 0.6	25	12.2	0.7, 0.9, 1, 1.25, 1.5	60	20.5	2, 2.5, 3
12	5.2	0.5, 0.6	28	10.2	0.8, 1, 1.25, 1.5	60	25.5	2.5, 3
12	6.2	0.5, 0.6	28	12.2	1, 1.25, 1.5	60	30.5	2.5, 3, 3.5
12.5	5.2	0.5	28	14.2	0.8, 1, 1.25, 1.5	63	31	1.8, 2.5, 3, 3.5
12.5	6.2	0.35, 0.5, 0.7	31.5	12.2	1, 1.25, 1.5	70	25.5	2
14	7.2	0.35, 0.5, 0.8	31.5	16.3	0.8, 1.25, 1.5, 1.75, 2	70	30.5	2.5, 3
15	5.2	0.4, 0.5, 0.6, 0.7	34	12.3	1, 1.25, 1.5	70	35.5	3, 4
15	6.2	0.5, 0.6, 0.7	34	14.3	1.25, 1.5	70	40.5	4, 5
15	8.2	0.7, 0.8	34	16.3	1.5, 2	71	36	2, 2.5, 4
16	8.2	0.4, 0.6, 0.7, 0.8, 0.9	35.5	18.3	0.9, 1.25, 2	80	31	2.5, 3, 4
18	6.2	0.4, 0.5, 0.6, 0.7, 0.8	40	14.3	1.25, 1.5, 2	80	36	3, 4
18	8.2	0.5, 0.7, 0.8, 1	40	16.3	1.5, 2	80	41	2.25, 3, 4, 5
18	9.2	0.45, 0.7, 1	40	18.3	2	90	46	2.5, 3.5, 5
20	8.2	0.6, 0.7, 0.8, 0.9, 1	40	20.4	1, 1.5, 2, 2.25, 2.5			
20	10.2	0.5, 0.8, 0.9, 1, 1.1, 1.25, 1.5	45	22.4	1.25, 1.75, 2.5			